

TECHNICAL RIDER AND STAGE PLOT

For any information, please contact:

Mohanad Abu Hamdieh

Mobile: +972 599 533309

E-mail: mras66@hotmail.com

1. STAGING SPECIFICATIONS (see plan)

A) STAGE (for outdoor venues): Flat, even stage of powerful construction with no gaps in between the decks of the stage, equipped with safety rails (back stage, left and right stage), front and sides dressed with black drape.

Dimensions

- Wide : 16m.
- Deep : 12m.
- Height : 0.8 - 2m.

B) ACCESS STAIRS: two sets of access stairs equipped with handrails.

C) RISERS: Two (2) levels of risers of adjustable height in black, black drape front dressed.

- 8 x risers: 2 m wide x 1 m. depth x 40 cm. height (2x (4m width x 2m depth)) for coral.
- 1 x riser: 2 m wide x 1 m. depth x 40 cm. height, for Perc.
- 1 x riser: 2 m wide x 1 m. depth x 40 cm. height, for Q Bass.

D) Chairs on stage (14), one stool for Q. Bass

E) Note stands with lights on stage (18) eighteen.

See "stage plot" for positions

F) Please provide us with a big table (standard size) or two small size tables for merchandise.

2. FOH SOUND REINFORCEMENT

- Professional quality system, E.g.: Martin-Audio / Mayer sound / Lacoustic Line array

with all Subs needed, near field and Front fills and delay tours if needed.

- The size of the PA system should be able to deliver 106 db(A), high quality, distortion-free sound pressure to audience capacity with definition and uniformity, across all venue.
- House system must be able to cover the audience evenly with great amount of audio clarity. With access to main processors to correct linearity;

The Ensemble's FOH engineer should have access to the concert hall on the day of the concert from 8 am and until concert time.

2.1 HOUSE MIX POSITION:

- Must be at a distance of 18-30 meters from the stage, aligned to the stage centre,

2.2 HOUSE MAINS:

- Mixing desk console:
 - Digital mixing desk console is preferred:
 - o Midas Pro6 / pro3 / pro2.
 - o Sound craft VI4 – VI6.
 - o Yamaha PM5d RH
 - o I Live digital 144 / T112 A & H.

If Analogue mixer:

- Midas heritage
- Sound craft MH4 / MH3 / Series five or equally approved.

PLEASE CONTACT ME for all out board and effects needed by E-mail / mobile / Fax

2.3 MONITORS:

- Sixteen (16) stage monitors with 4 speaker stands where needed.
- Ten (10) AUX sends
- Ten (10) amplification channels

2.4 SPECIFIC GEARS:

- **DPA microphones is a must for outdoor venues**

- Provide intercom between FOH desk, light desk and backstage.
- Microphones: see the patch list, stands, and cables.

Backline:

- We are not travelling with contrabass, Please provide the Ensemble’s with a good contrabass.
- **Site – FOH eng., Stage Monitor eng. and assistants** should be available throughout the rehearsal and concert until the end of concert.
- We are not traveling with our monitor eng. We will need to have a well experienced monitor eng.

3. STAGE LIGHT

- Please provide enough lighting for musicians and singers on stage to see scores properly
- Use warm color gels (see DVD)

Microphone Patch List

CH.#	Inst. Inputs	Mice.	Insert	Mix	Stands
1	violin	DPA 4099V/ KM184		Mix 2	Tall
2	violin	DPA 4099V/ KM184		Mix 2	Tall
3	violin	DPA 4099V/ KM184		Mix 2	Tall
4	violin	DPA 4099V/ KM184		Mix 2	Tall

5	Nai	SM58	Comp.	Mix 3	medium
6	Qanoun	Beta 57		Mix 4	Short
7	Qanoun	KM184/C451			Short
8	OU D	KM184 / sm81		Mix 5	Clip on
9	Buzoq	ATM35	Available with the Ensemble	Mix 6	Clip on
10	Bander	SM57/Beta 57	Comp.	Mix 10	Short
11	Tabla	SM57/Beta 57	Comp.	Mix 10	Short
12	Daff	SM57/Beta 57	Comp.	Mix 10	Short
13	Q Bass	DPA 4099B	Comp.	Mix 9	Tall
14	VOX G1	BETA 58A/SM58	Comp.	Mix 7	Tall
15	VOX G2	BETA 58A/SM58	Comp.	Mix 7	Tall
16	VOX G3	BETA 58A/SM58	Comp.	Mix 7	Tall
17	VOX G4	BETA 58A/SM58	Comp.	Mix 7	Tall
18	VOX B1	BETA 58A/SM58	Comp.	Mix 8	Tall
19	VOX B2	BETA 58A/SM58	Comp.	Mix 8	Tall
20	VOX B3	BETA 58A/SM58	Comp.	Mix 8	Tall
21	VOX B4	BETA 58A/SM58	Comp.	Mix 8	Tall
22	Solo VOX	BETA 58A	Comp.	Mix 1	Tall
23	Solo VOX	BETA 58A	Comp.	Mix 1	Tall
24	Wireless (bozuq Vox)	Sm58		Mix 6	
25	Spare				
26	Spare				
27	Talk back	SM58		All Mixes	
St.Mtx L.	Rec.				

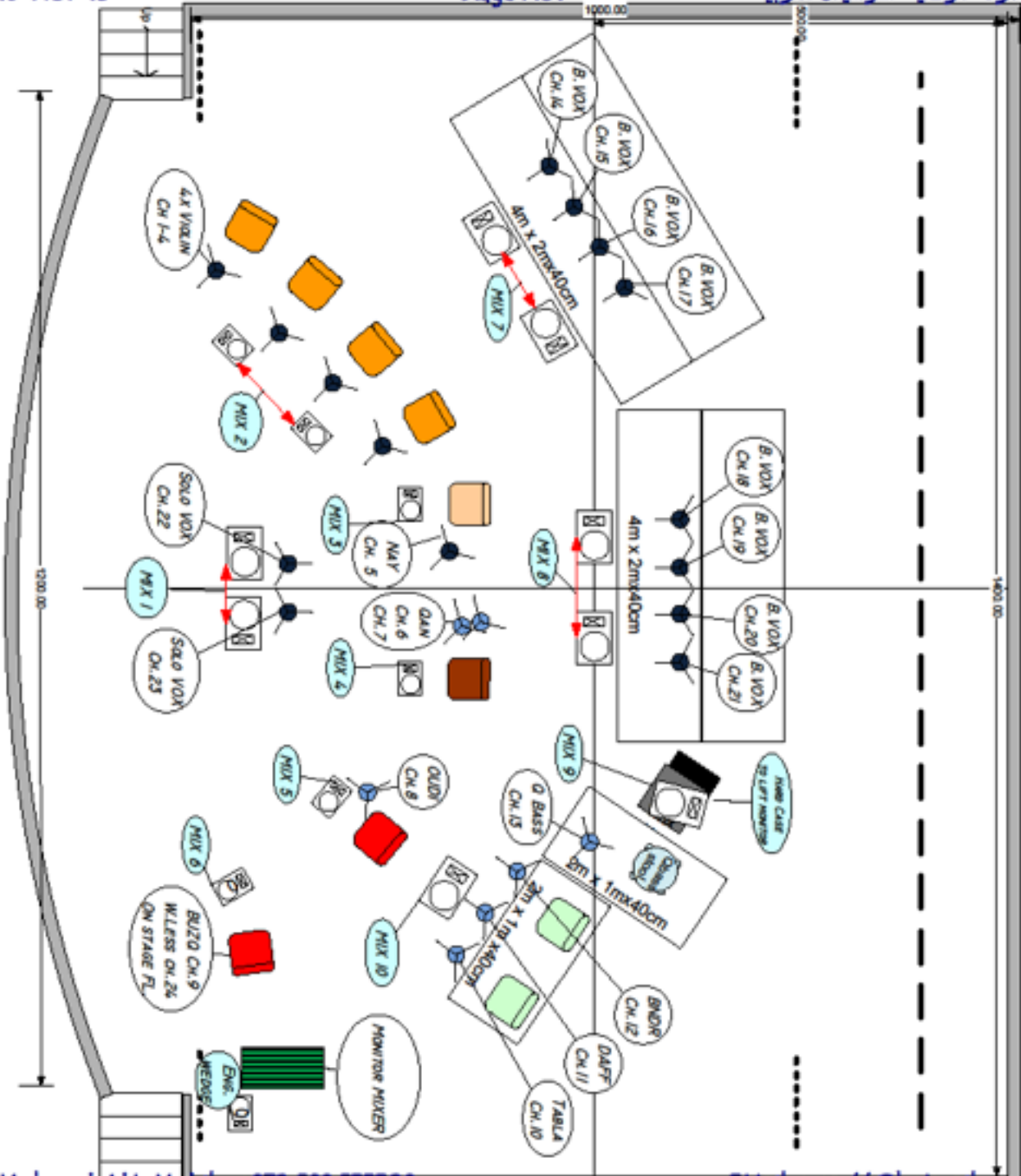
St.	Rec.				
Mtx R.					

Stage Plot

16-Nov-13

Stage Plot

الفرقة الوطنية للموسيقى العربية



Mohamad AH. Mobile +972 599 533309

EMail: mraq66@hotmail.com